

Automatic V-JET hand dryer


- High range of hand dryer. It works with an exclusive application of air micro currents at high speed without using hot air.
- Suitable for collectivities and designed for high traffic bathroom and continuous use.
- Sturdy and vandal proof.
- High performance and efficiency. Consumes up to 85% less than others hand dryers.
- Drying time: 10-12 seconds.
- Microban® Antibacterial protection included in the plastic at the point of manufacture to provide continuous protection from microbes.
- Water tank and dust filter included.
- Includes a cleaning brush to prevent or solve blockage problems produced by dirt.
- Way of use: placing the hands in the inner channel of the apparatus, without having to move them.
- Manufactured under security CE norms.

TECHNICAL DATA

- Exterior shell and water tank made of high impact ABS of 2.6 mm thickness.
- Net voltage: 220-240 V / 50-60 Hz (110/120 V version available).
- 2 motors with brushes: 30.000 r.p.m.(maintenance required).
- Total electrical power: 1760 W.
- Consume (230Vac): 8 A.
- Isolated: Class II.
- IP protection rating: IPX1.
- Dimensions: 617 height x 300 width x 195 depth (mm).
- Audible pressure: 70 dB.
- Weight: 9,55 Kg.
- Air speed: 370 Km/h.
- Maintenance: only monthly maintenance required, just keep the filter clean and emptying the water tank.

SUGGESTED TEXT FOR PRESCRIPTION

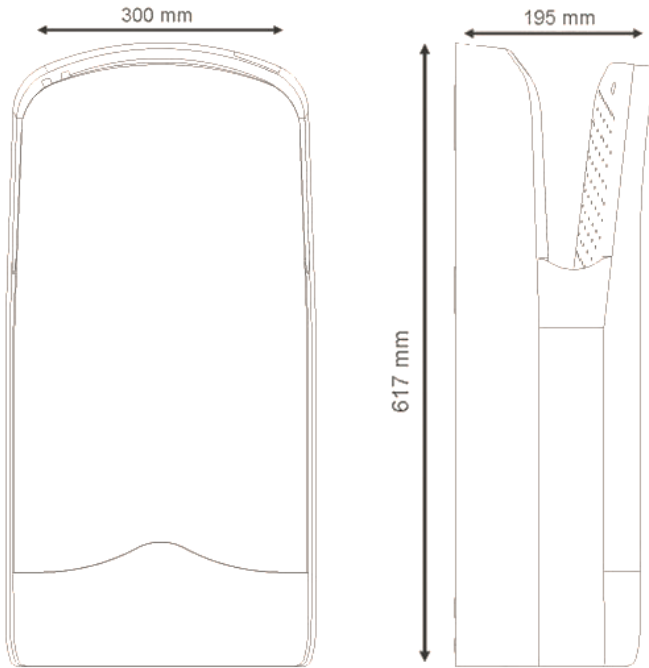
NOFER "V-Jet" hand dryer injected high speed air activated by sensor, 1760 W motor. White ABS cover. Also available in other colors. Dimensions: 617 height x 300 width x 195 depth (mm).



NOFER S.L.
 Avenida de la fama, 118
 08940 · Cornellà de Llobregat (Barcelona)
 Tel +34 934 742 423 · Fax +34 934 743 548
 export@nofer.com · www.nofer.com

Related Products

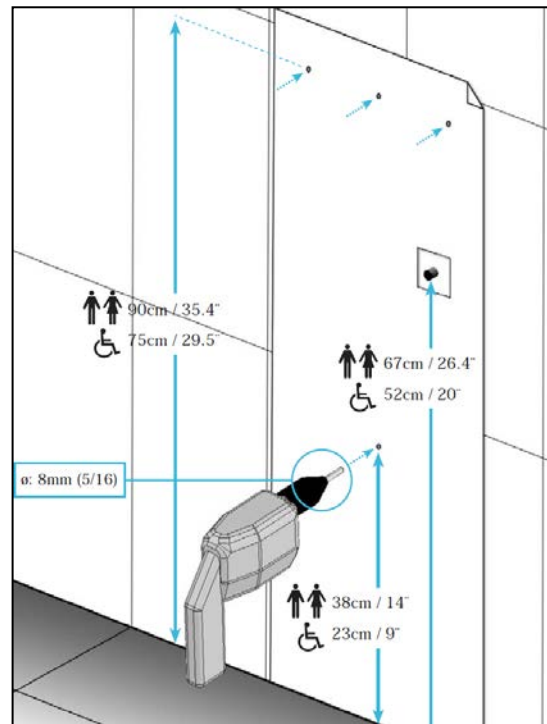
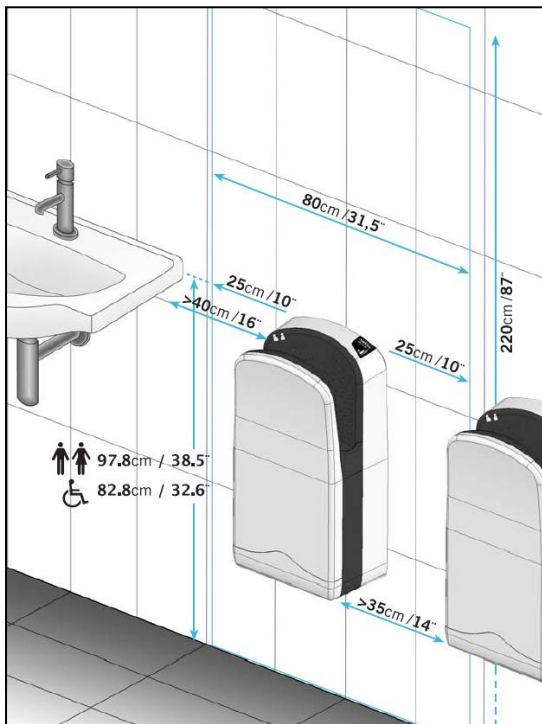

TECHNICAL DRAWING



Dimensions in mm.

INSTALLATION

In toilet areas with a high frequency use, the recommendation is to install one hand dryer for each toilet. In toilet areas with a lower frequency of use, the recommendation is to install one hand dryer for every two sinks or two dryers for every three washbasins. Installation should be as shown in pictures both for standard or adapted bathrooms.



NOFER S.L.
 Avenida de la fama, 118
 08940 - Cornellà de Llobregat (Barcelona)
 Tel +34 934 742 423 - Fax +34 934 743 548
 export@nofer.com - www.nofer.com